



# Blu-Tec

Naval and Industrial Repairs



## PROFILE

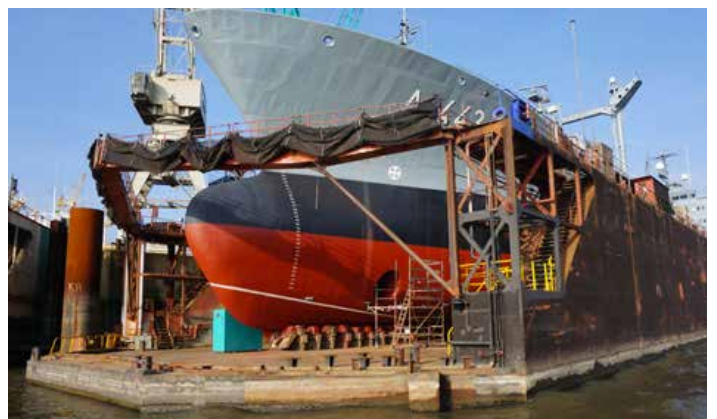
The BLU-TEC s.r.l. was born from decades of experience in Naval and Industrial repairs. The baggage of experience has always been carried out with passion, competence and professionalism, over the years has led to the Blu-Tec s.r.l. to expand its customer portfolio, a great variety of jobs and maintenance services nationally and abroad, always ensuring customer satisfaction.



## SERVICES

The BLU-TEC s.r.l. it is able to offer ordinary and extraordinary maintenance interventions on various sectors in which it operates, always guaranteeing customer satisfaction through rapid and comprehensive responses to the most varied needs of the customer.

The company has machines and instruments for the execution of general mechanical and precision work with fixed and portable machine tools. It is also able to perform mechanical, electrical and insulation repairs in rooms subject to high and low temperatures.

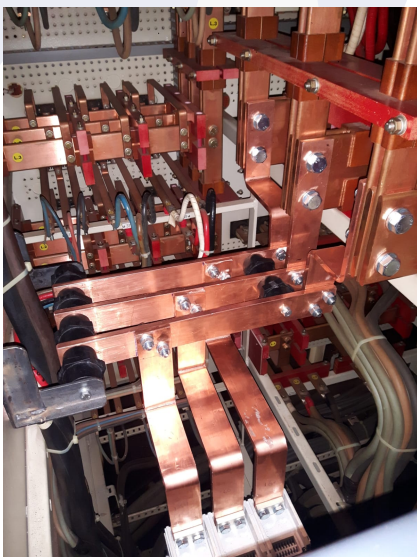




*La Blu-Tec s.r.l. has qualified personnel to propose, if required, for maintenance, as well as in our workshop, also at Vs mobile sites and / or fixed for the below listed interventions:*

## **NAVAL REPAIRS ELECTRIC DEPARTMENT**

- Electrical plant in shipbuilding and industry
- Power distribution cabinet designing and building, automatic change-over, to feed electrical systems and equipment on board
- Designing, building, repair or upgrading of Control panels for lifting devices (monorail cranes, provision cranes, cranes)
- Designing, building, repair or upgrading of Control panels for diesel generator power units
- DOL starters designing and building for pumps and fans
- Control cabinets with frequency converters driven by field sensors (PID) for pumps and fans
- Installation of remote control kits on cranes.
- Rack cabinets with fiber optical box and ethernet
- Lan Networks
- Electrical plants in shipbuilding (Exhaust Gas Cleaning Systems, Ballast Water Purifying System, Reefer sockets, etc)
- Overhauling and repair of electrical equipment (alternators, electrical motors, circuit breakers, ecc)
- Mechanical and electrical overhauling of mooring winches (control,safety systems, auto mooring devices), winches for accommodation ladders, pilot ladders, ecc



## NAVAL REPAIRS MECHANICAL DEPARTMENT

- Air / oil refrigerant cleaning work in special washing tanks;
- Ordinary and extraordinary maintenance on D / G (24000-36000-48000-60000-72000-84000 running hours maintenance on WARTSILA W32, W12V46, W6L26, W38 a / b, Vasa32, etc.);
- Revision work on SULZER, B & W, MAN, MAC, MTU, DEUTZ, CATERPILLAR engines, etc.
- Revision of turbochargers on thermal engines;
- Total revolutions of propulsion and directional propellers;
- Technical assistance of the parent company on axis line, rudder axis, palm and plunger agile operations, etc.;
- Revision of various mechanical parts (main and auxiliary engine air coolants, condensers, various types of remote controlled and manual valves, bilge separators, etc);
- Repair of mooring and tonnage organs (cable rollers, mooring winches and windlasses etc.
- Repair interventions on boilers and economizers;
- Construction and assembly naval metallic carpentry;
- Review of electric motors in general and alternators;

## NAVAL REPAIRS INSULATION DEPARTMENT

- Insulation works in general with certified thermo-acoustic materials (boiler local economizer purifiers, transverse and longitudinal bulkheads with different classes of insulation;
- Repair of lifting and handling systems with linear and circular hydraulic actuators (crane, travel lift, etc.);





## INDUSTRIAL REPAIRS

- Ordinary and extraordinary maintenance on thermal engines;
- Assembly of industrial plants and machinery;
- Construction and assembly of industrial metal carpentry;
- Construction and assembly of industrial sheds;
- Ordinary and extraordinary maintenance on thermal engines;
- Electrical and mechanical maintenance interventions on different load handling systems: overhead cranes, cranes, etc;
- Assembly of industrial plants and machinery;
- Construction and assembly of industrial metal carpentry;
- Mechanical and carpentry maintenance work on TBM drilling machines for the construction of tunnels;
- Construction of tanks including pipes with different diameters and different nominal pressures (Ped certification);
- Maintenance control system and Power Pack alarms;
- Fiber-optic networks for LAN and dedicated systems (eg ultrasonic anemometer);
- LAN networks according to ANSI / TIA / EIA-568-B.2-1 standards;
- Works of isolation installations in gender with certified thermo-acoustic materials;
- Construction and assembly of industrial sheds;

